



THE NEW

i300 2.0

- NEW **2.0MP** CAMERA
- 30%** MORE ACCURATE

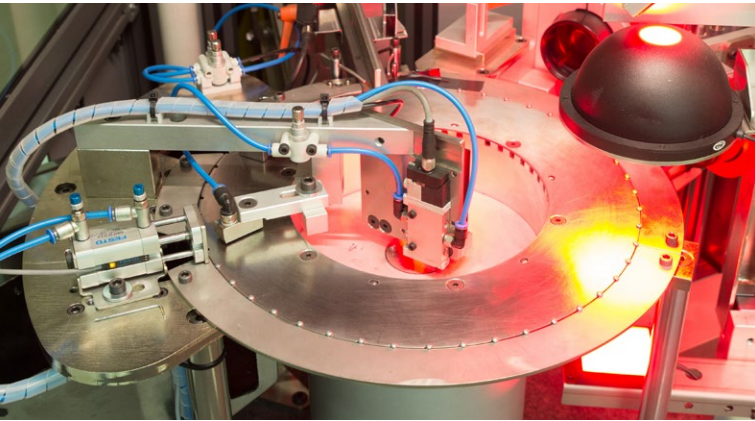
i300 Series

High quality **100%**
inspection systems

Regg Inspection designs and manufactures high quality inspection systems with modular design.

Feeding

- Fully Integrated feeding system for smooth and fast inspection.
- Widest choice of feeding system depending on inspected part.
- Single piece loading or fast continuous loading.
- Ready to accept customer's feeding systems.

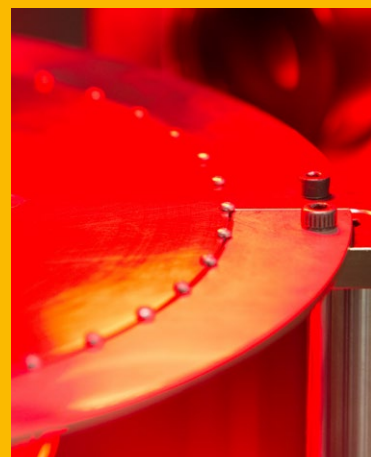
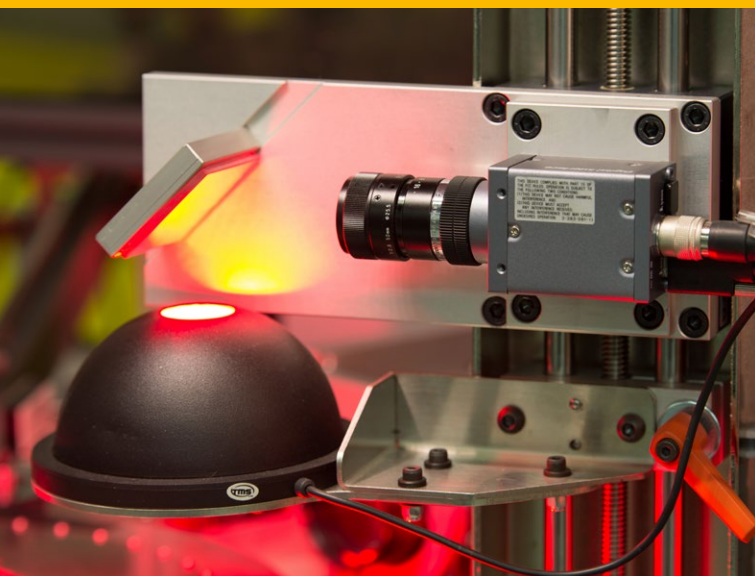
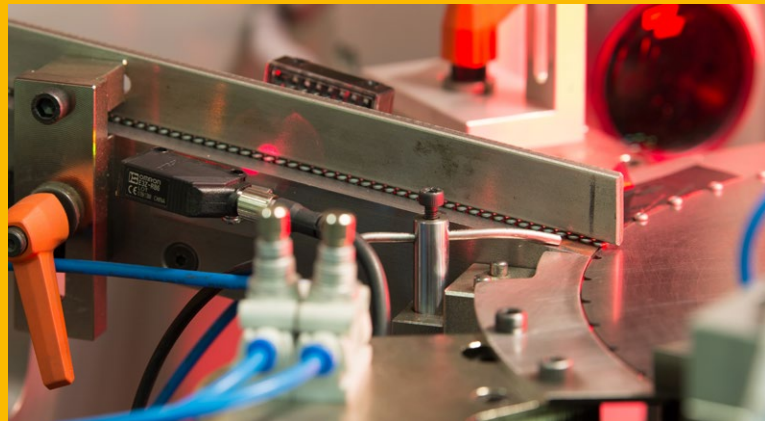


Positioning

- Wide rotary table for fast and accurate inspection.
- 300 mm (11.8") dia. rotary table, the widest in the industry.
- All parts are always in a traceable position from entrance to exits chutes.
- The widest rotary table in the industry for higher inspection modules.
- Up to six (6) inspection modules plus two (2) exit chutes.
- Internal part of the table stationary for easy positioning of inspection devices and accessories.
- Robust module frames and supports for precision and durability.

Control

- Camera modules.
- Latest vision technologies.
- Standard High resolution digital firewire cameras.
- Special Ultra-High resolution camera for controls.
- Highest quality bi-telecentric optics.
- Highest quality telecentric led direct/backlight.

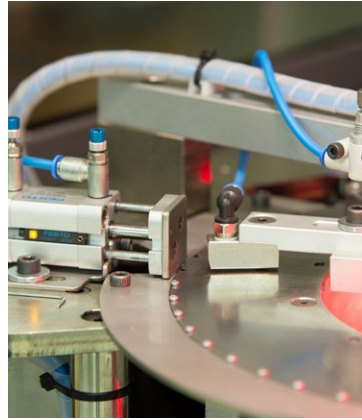


Exit chutes

- Two exit chutes.
- Packing.
- Conveyors.

Peripheral equipments

- Vacuum system.
- Marking systems.
- Teleservice.
- Barcode scanner.



Features & benefits

Machine design

Modular Design

- Possibility to upgrade the machine with additional inspection modules for a calibrated investment.

Two layers granite base foundation for strength and stability.

- The most robust machine in the industry.
- Granite base symmetry and flatness less than .0004" (.01 mm)
- Granite base stability for vibration inhibiting due to plant machine operation, other plant operating machinery, vibratory feeders, etc.

Highest quality pneumatic, electric and mechanical components for reduced maintenance and increased up time.

Surround enclosure designed for ease of sight and ease of entry for operator and management.

Wide doors on any machine side with safety switches for easy machine access for easy change over and maintenance. Swinging operator panel easy accessible in all positions.

Machine control

Easy and intuitive Human Machine Interface (HMI) both for operators and programmers.

- Wide Touch screen control panel.
- All controls integrated into one screen.
- Help on line for easy troubleshooting.
- All data and trend visible.
- All data recorded and exportable via USB or WiFi.

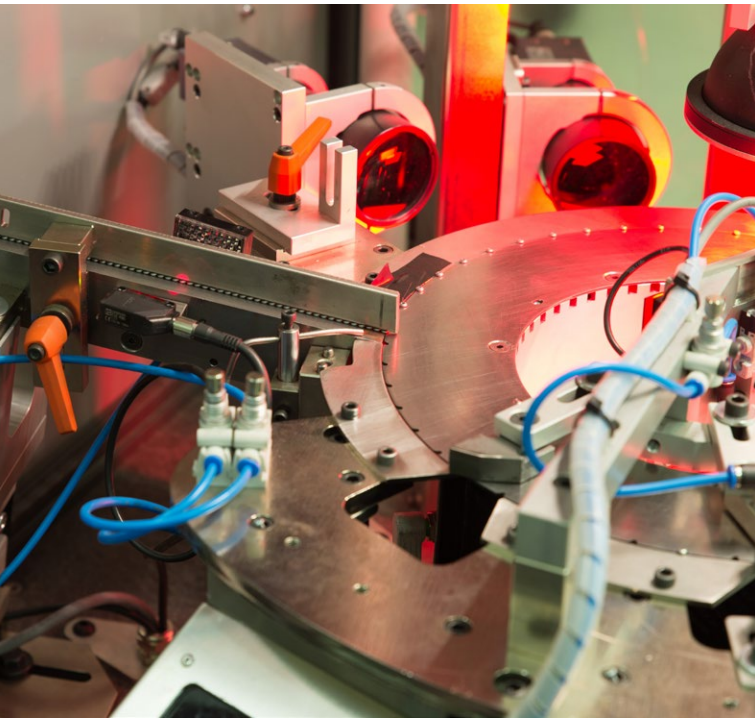
Two onboard computer for ideal separation of system functionality and operational assurance.

- Industrial Computer for program software utilizing Windows 7 operational software.
- PLC computer for managing support equipment including, table rotation, units synchronization, loading and off-loading. Industrial PC fanless for durability and reduced maintenance.

Two separate and sealed electrical cabinets for reduced interference, easier maintenance and longer electrical components life.

Built-in cpk function. Anti-locking device to minimize manual intervention.

- The table try to disengage automatically in case part is blocking the table.



Modular design

The machine can be equipped with vision systems, mechanical recess control, 360 degree profile control, eddy current crack detection, hardness control, and other special applications.

Skilled staff

The company has a highly skilled technical staff, which is able to design and manufacture the highest quality inspection systems in the market.

Service

Service center with skilled technicians are based in all main markets.

Machine Specifications	i300	i300-HS	i300-G
Min / Max Dia. (mm)	M2.5 - M12	M2.5 - M12	1 - 32
Min / Max Length (mm)	3 - 100	3 - 100	1 - 24
Max camera number	5	5	5
Mechanical controls		•	
Eddy current control		•	
Hardness y/n		•	
Table Type	Steel	Steel	Glass
Max Speed (pcs/min)	450	650	300
Dimension (mm)	950 x 1000 x 2000		
Weight (kg)	550		

All specifications are subject to change without prior notice. All pictures are for reference only. © Copyright REGG Inspection S.r.l.



REGG Inspection S.r.l.

Via Ticino, 30/G
 20064 - Gorgonzola (MI) - Italy
 Tel. +39 02 9574 6376
 Fax +39 02 9574 4153
info@regginspection.com
www.regginspection.com